

Technical Specifications

Sound Stage

Length	35m (114.9ft)
Width	25m (82ft)
Height	15m (49ft) [to underside of grid]
Area	875m ² (9418.4ft ²)
Power	Stage Lighting: 415kVA Stage Engineering: 235kVA Audio Visual: 120kVA Technical Power: 95kVA
People	300
Rigging	Capacity of 60tons 28 Travelling beams rated at 1100kg Powered Flying, Point Hoists and 3D Performer Flying Counter Weight (Single and Double Purchase) Tension Wire Grid, Arena Grid and Theatre Grid
Details	Black Wool Serge curtain on running track at 9m Two 5m x 5m Acoustic Dock Doors Patching for Socapex, DMX, Audio, Comms, Video and Ethernet Full Disabled Access

Auxiliary Spaces

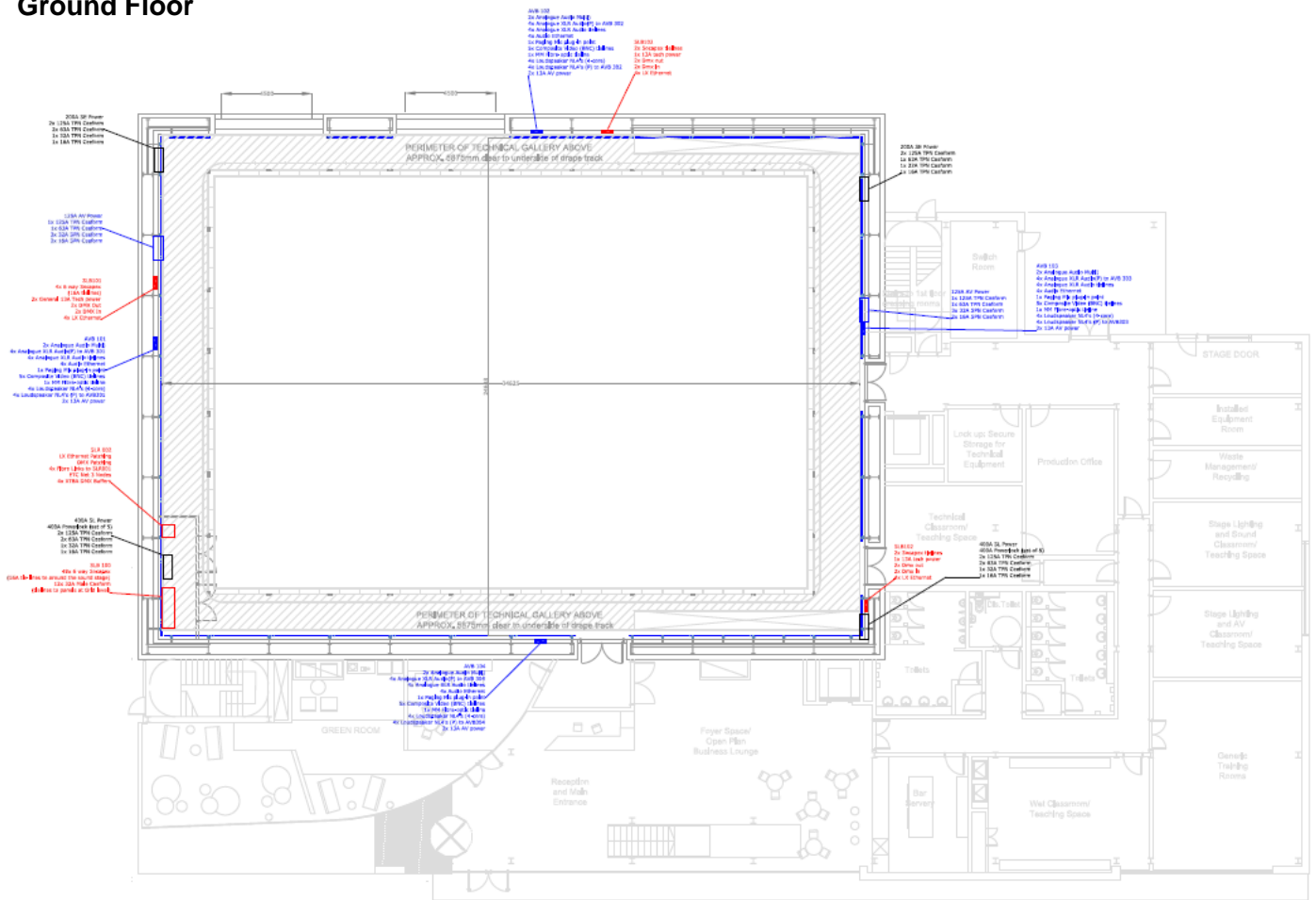
Production Office
Technical Workshop
Dance Studio
Generic Training Rooms

Green Room
CAD Suite
Dressing Rooms
Laundry Room

Recording Studio & Band Rehearsal Room

Featuring an Audient 48 Channel Console and running Protools software.

Ground Floor



Second and Third Floor

